

5.

HIWIN LAM Series (1)

LAM-1 / -2

CE



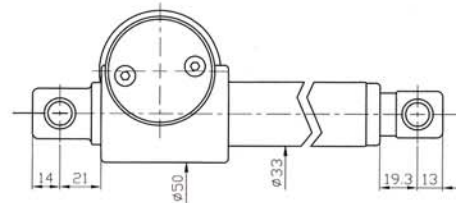
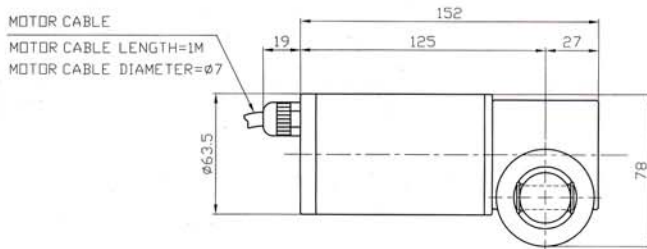
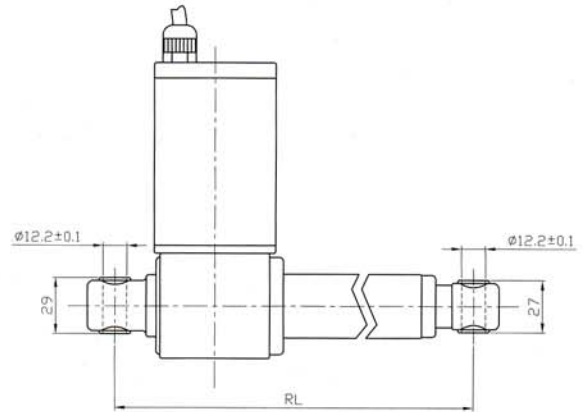
Screw type	Ball screw / ACME
Weight*	2.2 kg
Protection	IP54
Compatible controller	LAK2 / LAK2L / LAK2B / LAK6B
Working temp	+5°C ~ 40°C

* Stroke length 100 mm

* Option: (1) IP65

(2) Gear box material : S45C (Standard: AL)

(3) Gear box housing turned 90°



- RL= S+153 (LAM-1/-2)
- RL= S+162 (LAM-1A/-2A)
- RL : Retracted length
- S : Stroke length