

6. HIWIN LAM Series (2)

LAM3

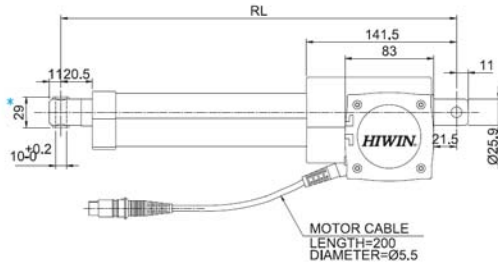
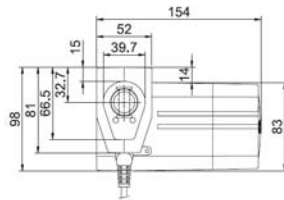
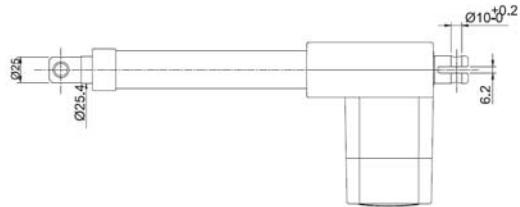


Screw type	ACME
Weight*	2.8 kg
Protection	IP 54
Compatible controller	LAK2D / LAK2B / LAK4 / LAK4B

Position feedback specifications (Hall Sensor)	
Supply voltage	24VDC
Output	High level 22VDC Low level 0.2v/40mA Sink (NPN)

*Stroke length 200mm
*Option: (1)IP 66
(2)Position feedback
(3)Safety Nut

• RL=S+171
RL : Retracted length
S : Stroke length



Note: Piston rod eye, marked with *, can be rotated 180° counterclockwise to adjust the orientation of the hole of the front end.